



CERNER FLASH

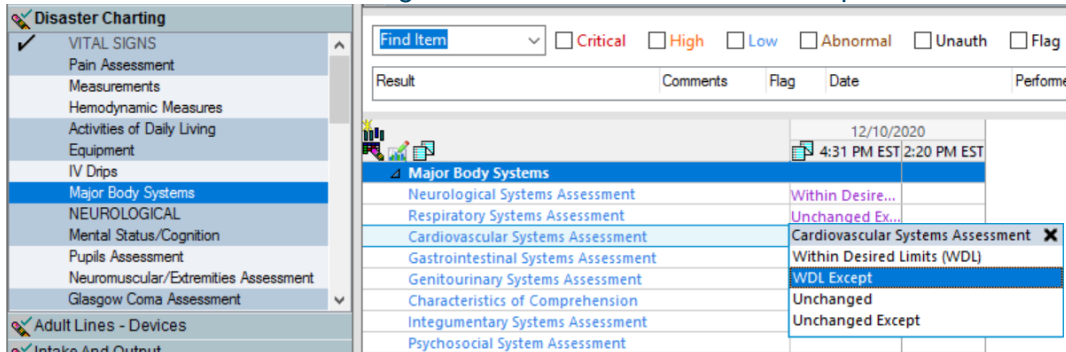
12/2020

Disaster Charting: Inpatient Nursing Staff

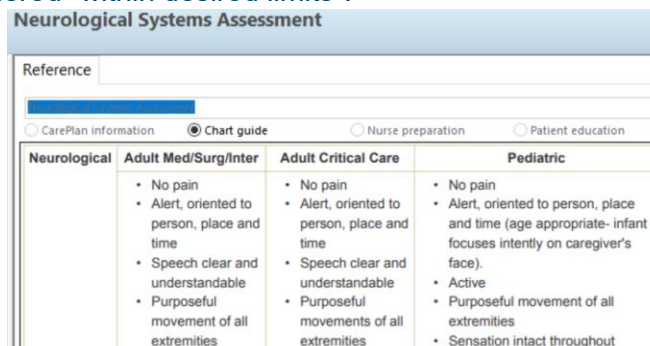
During the Covid-19 patient influx ONE McLaren has adopted a documentation reduction strategy for inpatient nursing. This reduction strategy applies to all acute patients, excluding Women’s Health and Emergency Department. Updates will be made live December 16th for disaster charting, including some acceptable reductions in regulatory requirement charting.

- Braden and Morse will only be required and tasked once per 24 hours.
- Required documentation of Interdisciplinary Plans of Care will be temporarily suspended so the Care Plan reminder task will be suppressed.
- A new Disaster Charting iView band will be added into iView. This band can replace quick view and systems assessment band charting in most instances. Charting by exception is encouraged.
- Restraints, lines, tubes and drains, medication administration and blood transfusion documentation requirements will remain the same.
- A nursing narrative note should be used for documentation of major events.

The iView Disaster Charting band includes most common sections charted on most patients. There is a Major Body Systems section that allows for charting within desired limits or with exceptions.



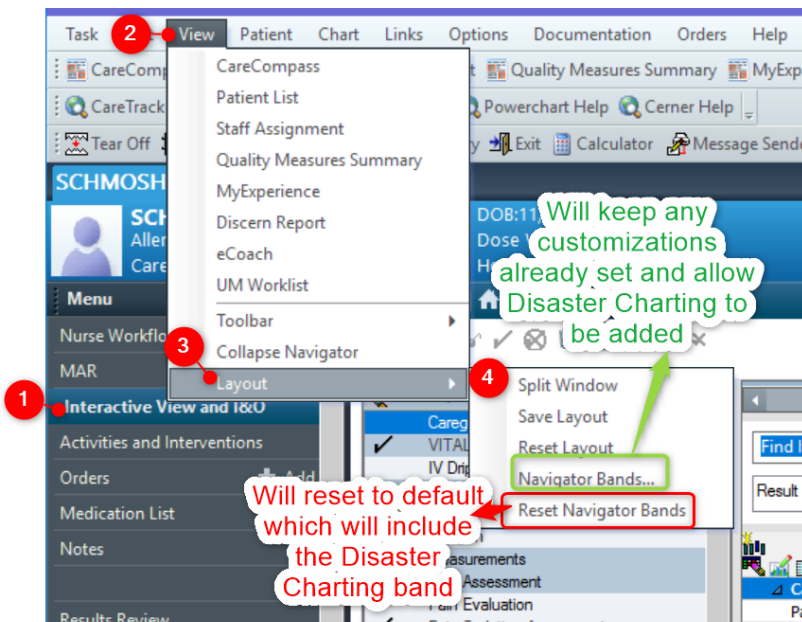
These fields are also available in their corresponding usual charting sections. Any exceptions should be documented in detail. Each of these new fields also has reference text (click on the blue text to launch) with descriptions of what is considered “within desired limits”.



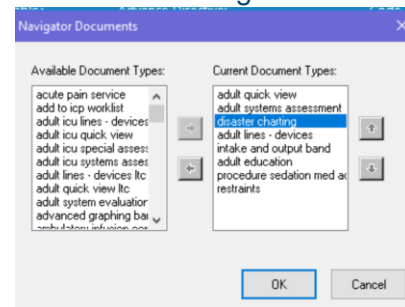
For example, if documenting a Neurological Systems Assessment as “WDL except”; continue through the assessment fields to document the exceptions. If abnormalities are assessed which deviate from “WDL”; document a complete assessment for that body system, as per usual routine.

Major Body Systems		
NEUROLOGICAL	NEUROLOGICAL	
Mental Status/Cognition	Neurological Systems Assessment	WDL Except
Pupils Assessment	Neurological Symptoms	Dizziness
Neuromuscular/Extremities Assessment	Characteristics of Communication	Receptive lan...
Glasgow Coma Assessment	Characteristics of Speech	
EENT	Characteristics of Verbal Expression	
RESPIRATORY	Characteristics of Comprehension	
Breath Sounds Assessment	Aspiration Risk	
Chest Tubes	Facial Symmetry	
	Bispectral Index (BIS)	

To view the Disaster Charting band, you may need to reset or customize your iView bands. To do this: Open a chart and navigate to Interactive View and I&O. From the menu, select View, then layout.



- Selecting “Reset Navigator Bands” will return the bands to the default setting for your current nurse position and will now include Disaster Charting.
- Selecting “Navigator Bands” will keep any customizations you have already applied and allow you to manually add the Disaster Charting band.



Click OK on the pop-up directing you to restart the application. Leave PowerChart through the Exit door icon to save your changes. Relaunch PowerChart and the new Disaster Charting band will now display in iView.