



CERNER FLASH

OB/GYN Note Type & Folder Additions

Thursday August 27, 2020

New Note Type & Folders Overview

Enhancement: Effective August 27th, new Obstetrics and Gynecology note and folder types, will be available for users to document and scan Ultrasound Imaging and Interpretations.

Obstetrics Note Types	Gynecology Note Types
Obstetrics US Imaging Interpretation	Gynecological US Imaging Interpretation

Obstetrics Folder Types	Gynecology Folder Types
Obstetrics US Imaging Interpretation	Gynecological US Imaging Interpretation
Obstetrics US Imaging	Gynecological US Imaging

Positions Impacted: All Provider and Clinical Staff positions within the OB/GYN specialties.

Provider Workflow for Choosing Note Types

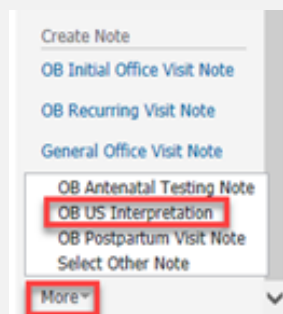
The Interpretation Note types can be accessed from the links on the Outpatient Workflow page or within the Documentation tab on the Menu Bar.

1.) From the **Outpatient Workflow** page:

- a. Scroll down to the **Create Note** section on the Navigation Pane.
- b. Choose the **Gyn Us Interpretation** Note type to document Gyn US Imaging results.

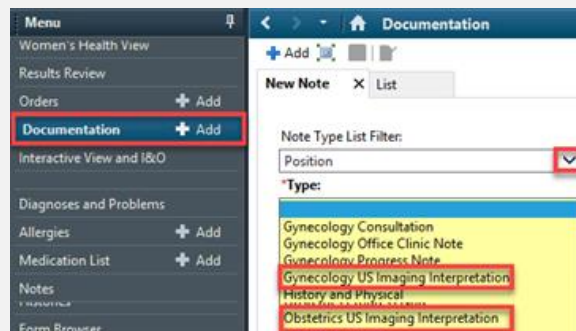


- c. Select the dropdown arrow next to **More**.
- d. Choose the **OB US Interpretation** Note type to document OB US Imaging results.



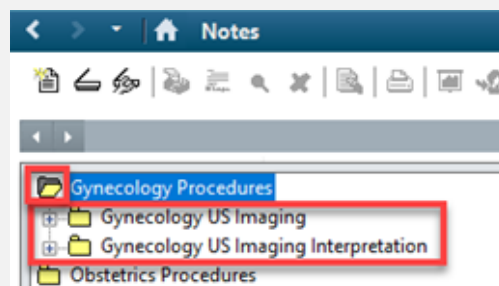
2.) From the Menu Bar, select **+ Add** on the **Documentation** tab. From the Note Type Filter List dropdown, choose **Position**. From the **Type** dropdown:

- Choose **Gynecology US Imaging Interpretation** to document Gyn US imaging results.
- Choose **Obstetrics US Imaging Interpretation** to document OB US imaging results.



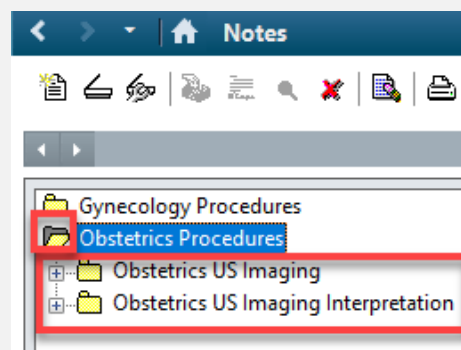
3.) The Gyn US images and completed notes can be found in a subfolder within the **Notes** tab.

- Double-click the **Gynecology Procedures** folder.
- Click the **Gynecology US Imaging** folder to view GYN US images.
- Click the **Gynecology US Imaging Interpretation** folder to view Gyn imaging results.



4.) The OB US images and completed notes can be found in a subfolder within the **Notes** tab.

- Double-click the **Obstetrics Procedures** folder.
- Click the **Obstetrics US Imaging** folder to view OB US images.
- Click the **Obstetrics US Imaging Interpretation** folder to view OB imaging results.





CERNER FLASH

Workflow for Scanning OB & GYN US Images & Reports

The following folders will be chosen when scanning OB & GYN Ultrasound images and reports.

Gynecology

- 1.) **Gynecology US Imaging:** Select this folder when scanning Gyn US images.
- 2.) **Gynecology US Imaging Interpretation:** Select this folder when scanning GYN US reports.

Add Document: ZZTEST, PREGNANT A - 3100017798

*Type: Gynecology US Imaging
Gynecology US Imaging
Gynecology US Imaging Interpretation
Hematology Consultation
Hematology Office Clinic Note

*Date:

Subject: Hematology Consultation
Hematology Office Clinic Note

Obstetrics

- 1.) **Obstetrics US Imaging:** Select this folder when scanning OB US images.
- 2.) **Obstetrics US Imaging Interpretation:** Select this folder when scanning OB US reports.

Add Document: ZZTEST, PREGNANT A - 3100017798

*Type: Obstetric Ultrasound Imaging
Obstetric Ultrasound Imaging
Obstetrics Clinic Procedure
Obstetrics Consultation
Obstetrics Office Clinic Note
Obstetrics Progress Note
Obstetrics US Imaging Interpretation

*Date:

Subject: Obstetrics Consultation
Obstetrics Office Clinic Note

Associate: Obstetrics Progress Note
Obstetrics US Imaging Interpretation

The scanned images and interpretations can be found in the **Notes** tab within the **Obstetrics** and **Gynecology Procedures** folder.